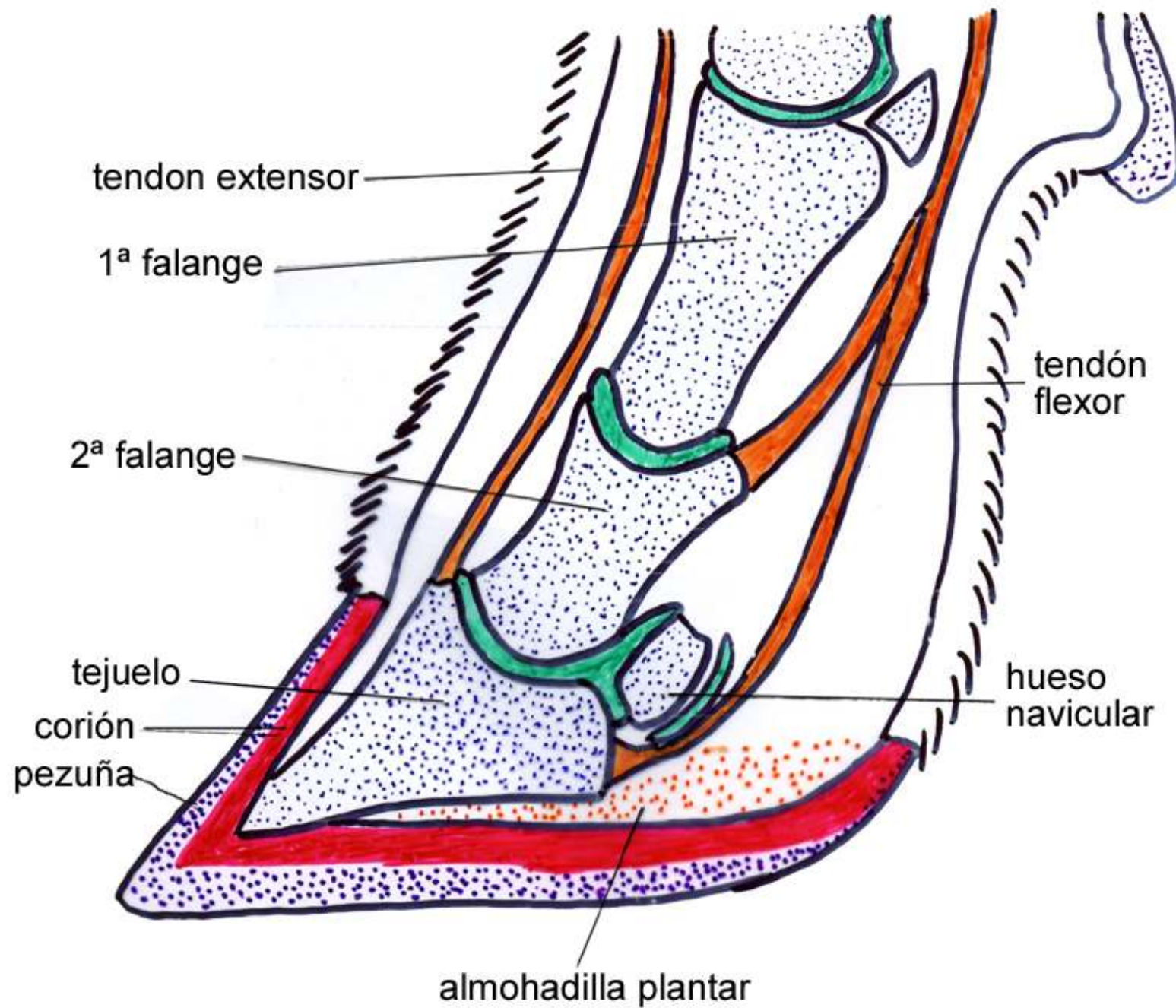




Laminitis


Juan Sánchez de Toca Triviño

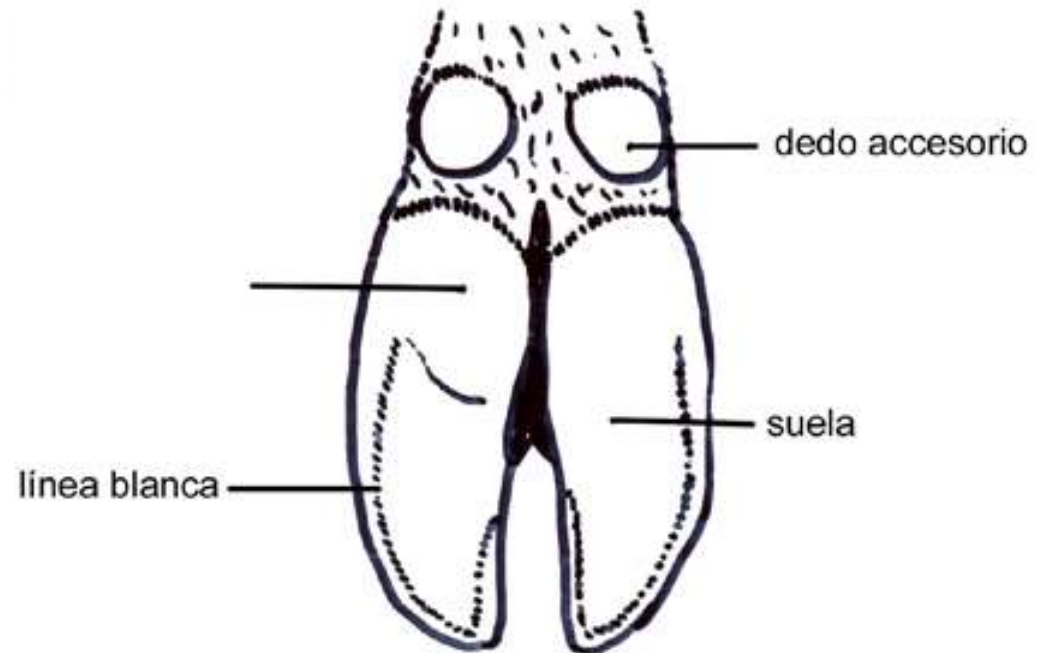


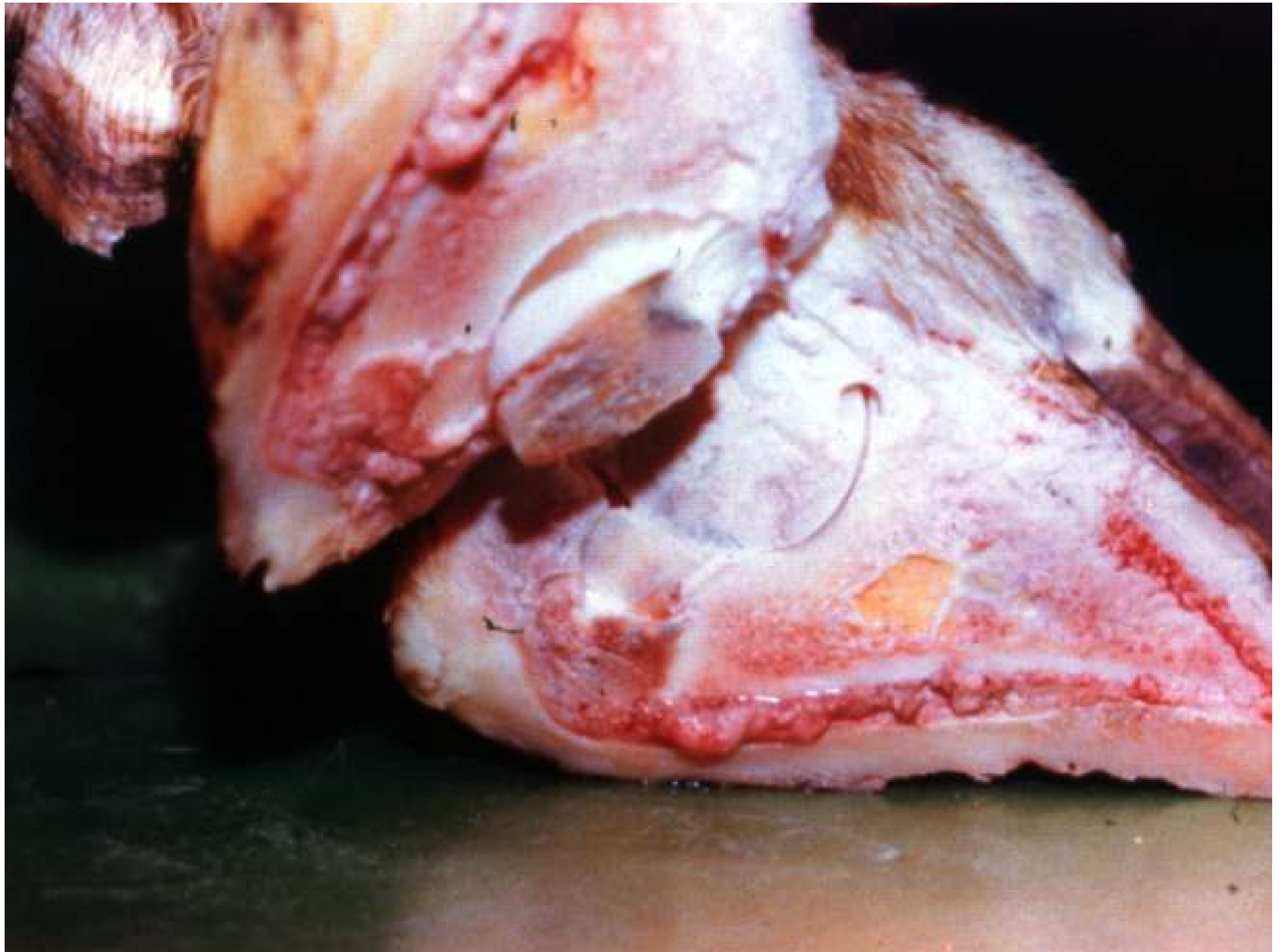






- 
- **Función del corion**
 - **Generar el casco**
 - **Soportar el tejuelo-esqueleto**







Laminitis aguda



2 25 '97

Laminitis subaguda





Incidencia:

- Fácil de ver los casos clínicos
- Difícil evaluar casos subclínicos



Etiología:

- Factores mecánicos
- Factores infecciosos y/o metabólicos
- Factores alimentarios





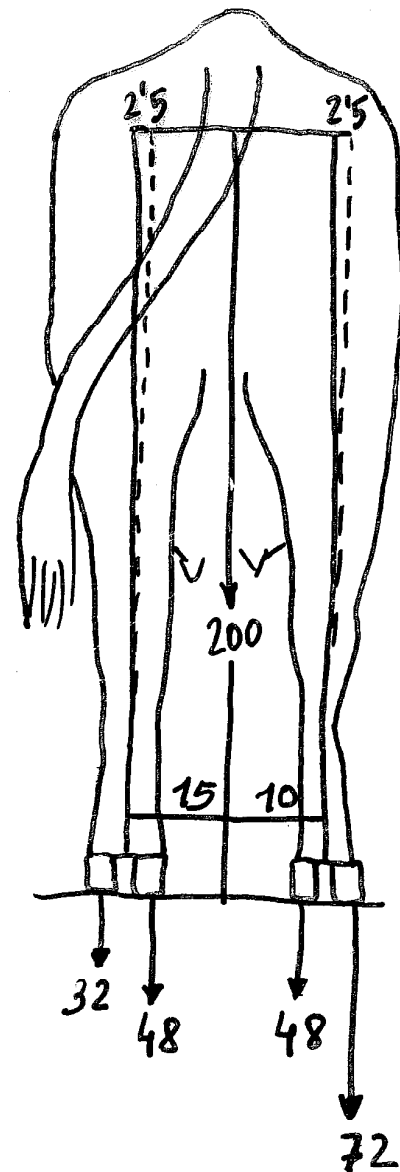
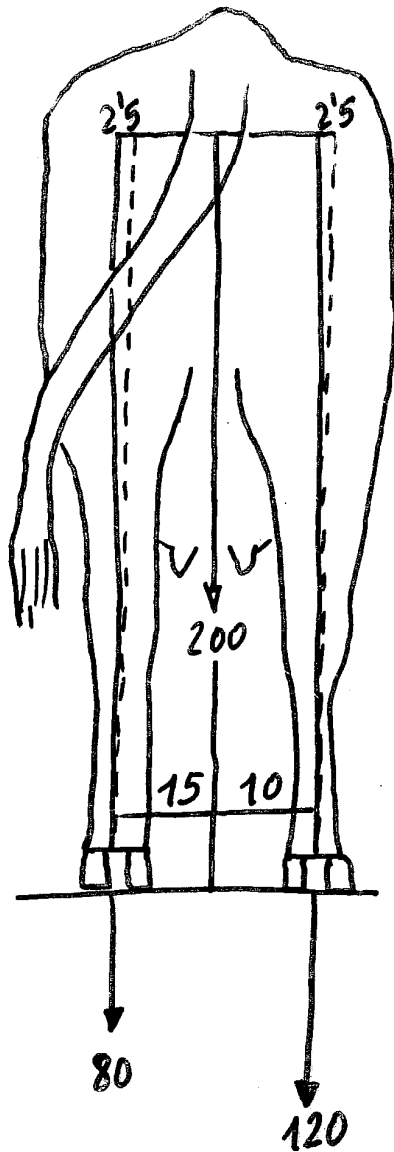
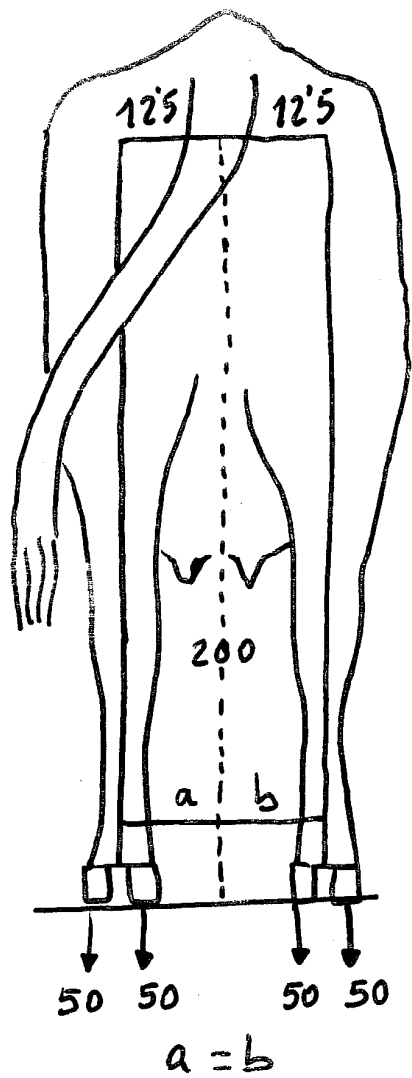


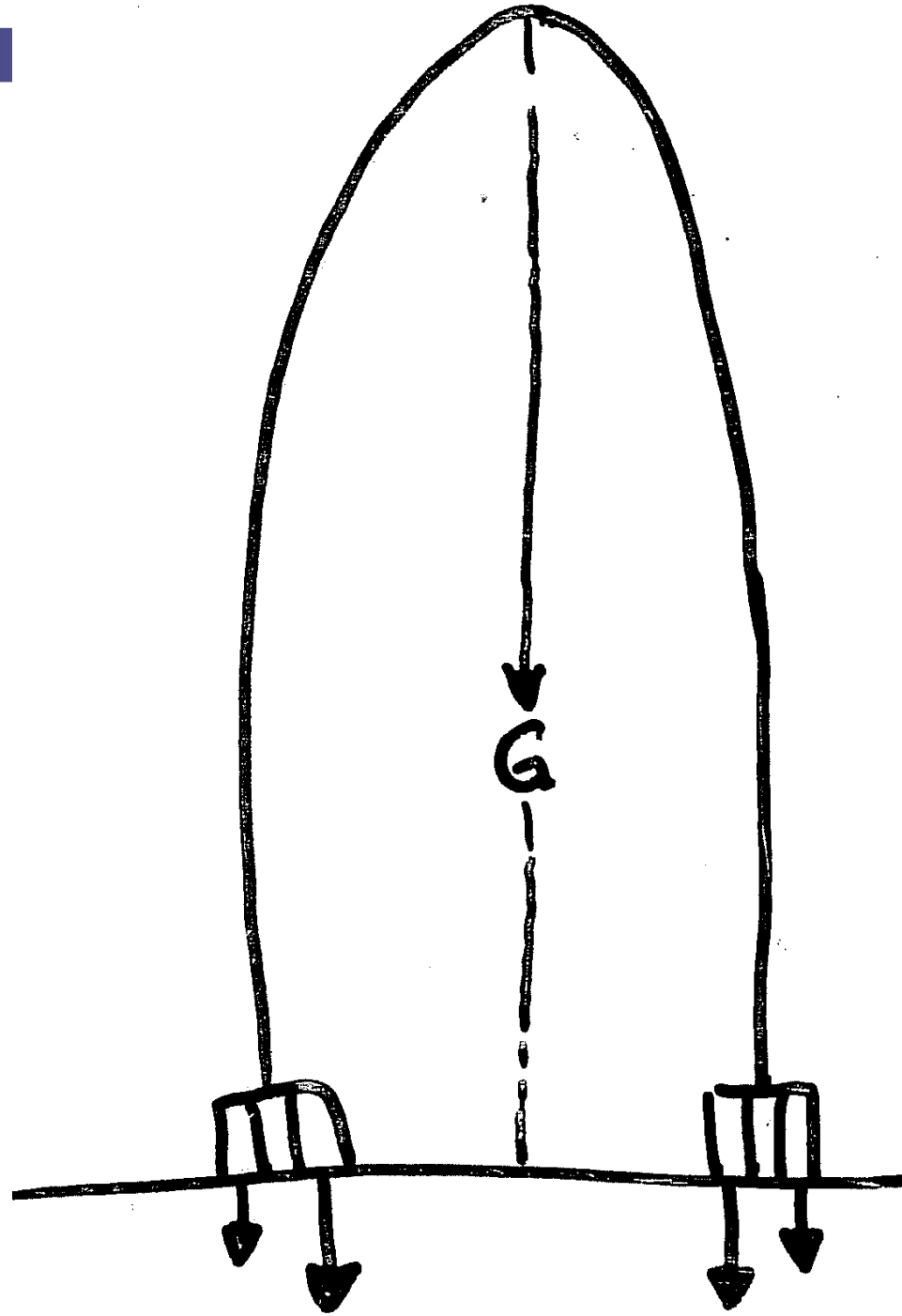
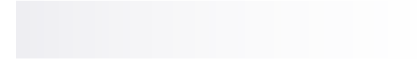






Pezuña externa trasera





9

1























18 05 01













254.39















Prevenção

- Causas mecánicas
- Causas infecciosas
- Preparto – postparto

Medidas alimentarias

- **Reparto concentrado**
- **Cambios suaves**
- **FNA \geq 35% MS**
- **Fibra efectiva**
- **Buffer**
- **CNF $<$ 40% MS**
- **Subproductos fibrosos**
- **Molienda**
- **Almidones diversos**
- **Comprobar humedad**
- **Evitar alimento en mal estado**
- **Evitar exceso de proteína degradable**

Muchas Gracias

