



INFORME LTO

SITUACIÓN DEL MERCADO LÁCTEO

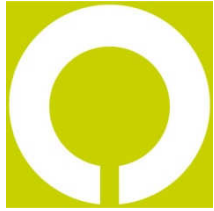
ADAPTACIÓN DEPARTAMENTO GANADERÍA

JUNIO 2012

www.agro-alimentarias.coop
deantonio@agro-alimentarias.coop
collado@agro-alimentarias.coop



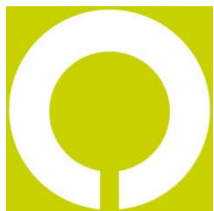
cooperativas
agro-alimentarias
>somos futuro



PRECIO DE LA LECHE

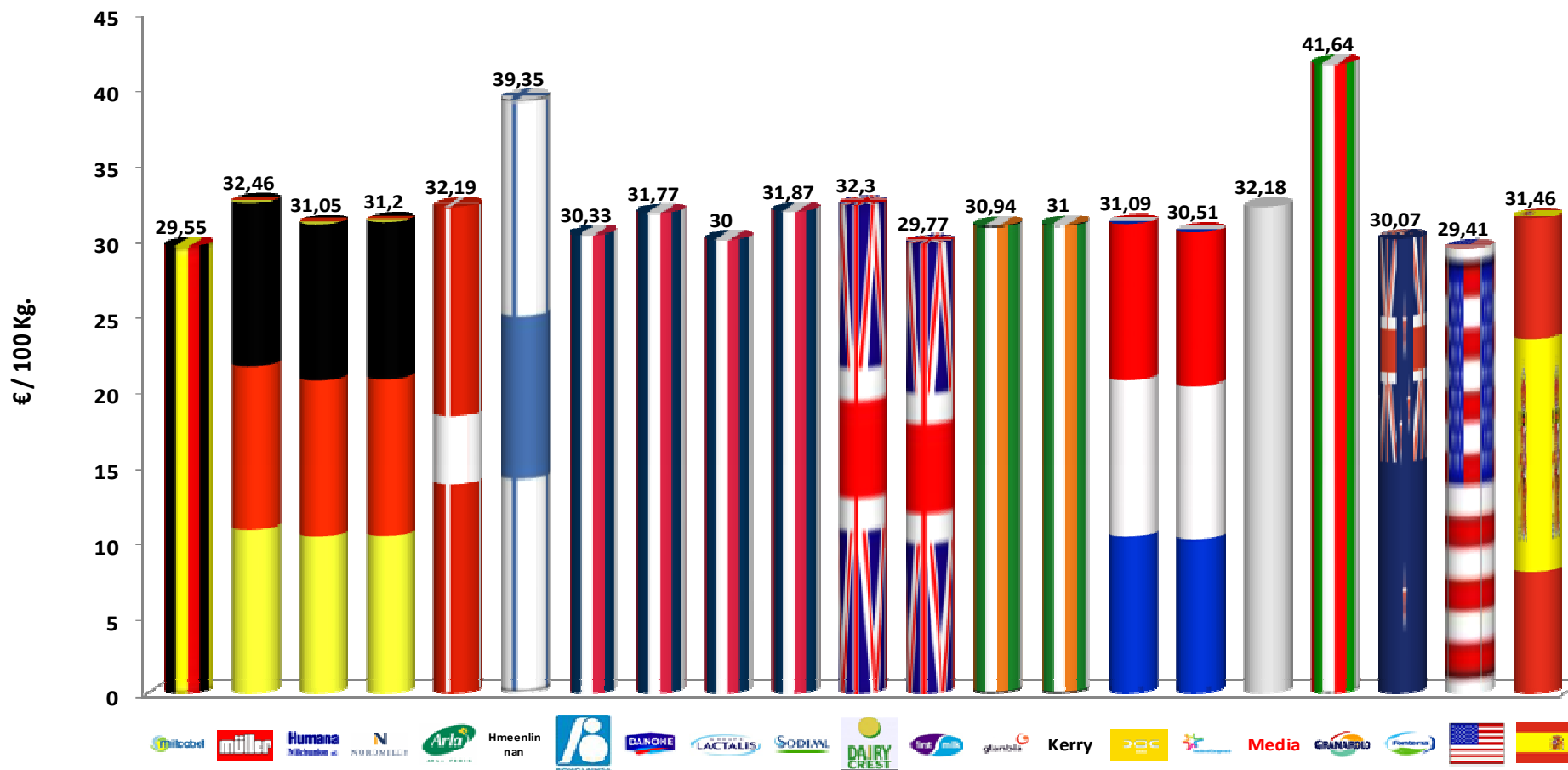
EMPRESA	abr-12	mar-11	var. mes	abr-11	var. Anual
Milcobel	29,55	30,60	-3,43%	34,28	-13,80%
Alois Müller	32,46	32,95	-1,49%	34,13	-4,89%
Humana Milch Union eG	31,05	32,04	-3,09%	34,02	-8,73%
Nordmilch	31,20	32,19	-3,08%	34,17	-8,69%
Arla Foods	32,19	32,08	0,34%	32,69	-1,53%
Hämeenlinnan Osuusmeijeri	39,35	39,35	0,00%	40,59	-3,05%
Bongrain CLE	30,33	34,02	-10,85%	31,06	-2,35%
Danone	31,77	34,45	-7,78%	32,75	-2,99%
Lactalis	30,00	34,73	-13,62%	31,03	-3,32%
Sodiaal	31,87	32,81	-2,86%	31,98	-0,34%
Dairy Crest	32,30	34,44	-6,21%	27,77	16,31%
First Milk	29,77	31,10	-4,28%	25,64	16,11%
Glanbia	30,94	33,91	-8,76%	32,92	-6,01%
Kerry	31,00	33,82	-8,34%	32,83	-5,57%
DOC Kaas	31,09	32,05	-3,00%	34,63	-10,22%
Friesland Campina	30,51	30,96	-1,45%	32,14	-5,07%
MEDIA	32,18	33,71	-4,54%	32,66	-1,47%
Granorolo	41,64	41,64	0,00%	40,18	3,63%
Fonterra	30,07	31,47	-4,45%	32,26	-6,79%
EE.UU.	29,41	29,24	0,58%	29,13	0,96%



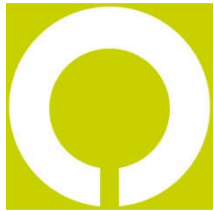


PRECIO DE LA LECHE

(ABRIL - 2012)

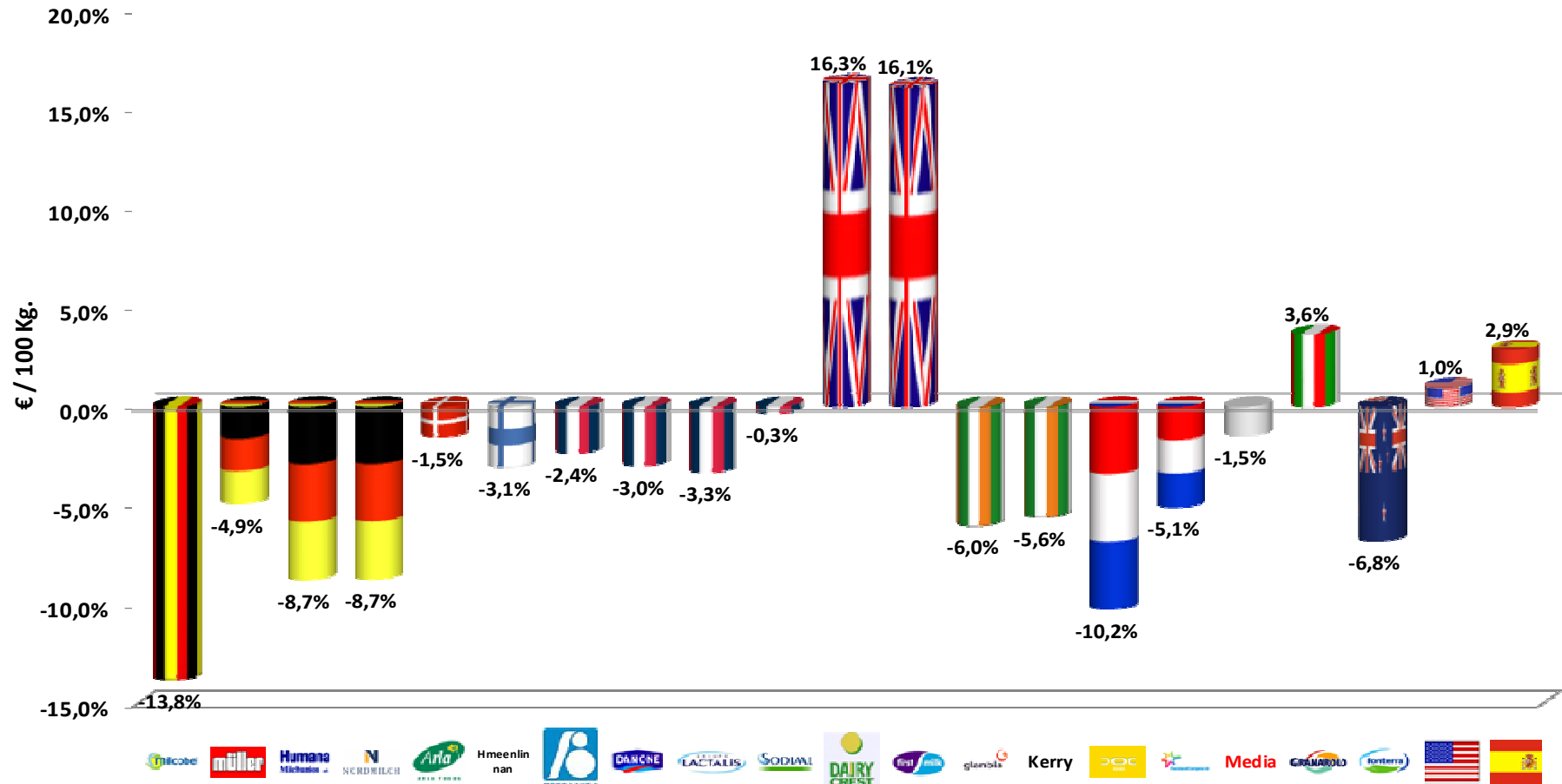


cooperativas
agro-alimentarias
>somos futuro

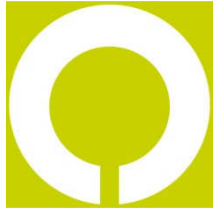


PRECIO DE LA LECHE

(VARIACIÓN ANUAL ABRIL 2012/2011)

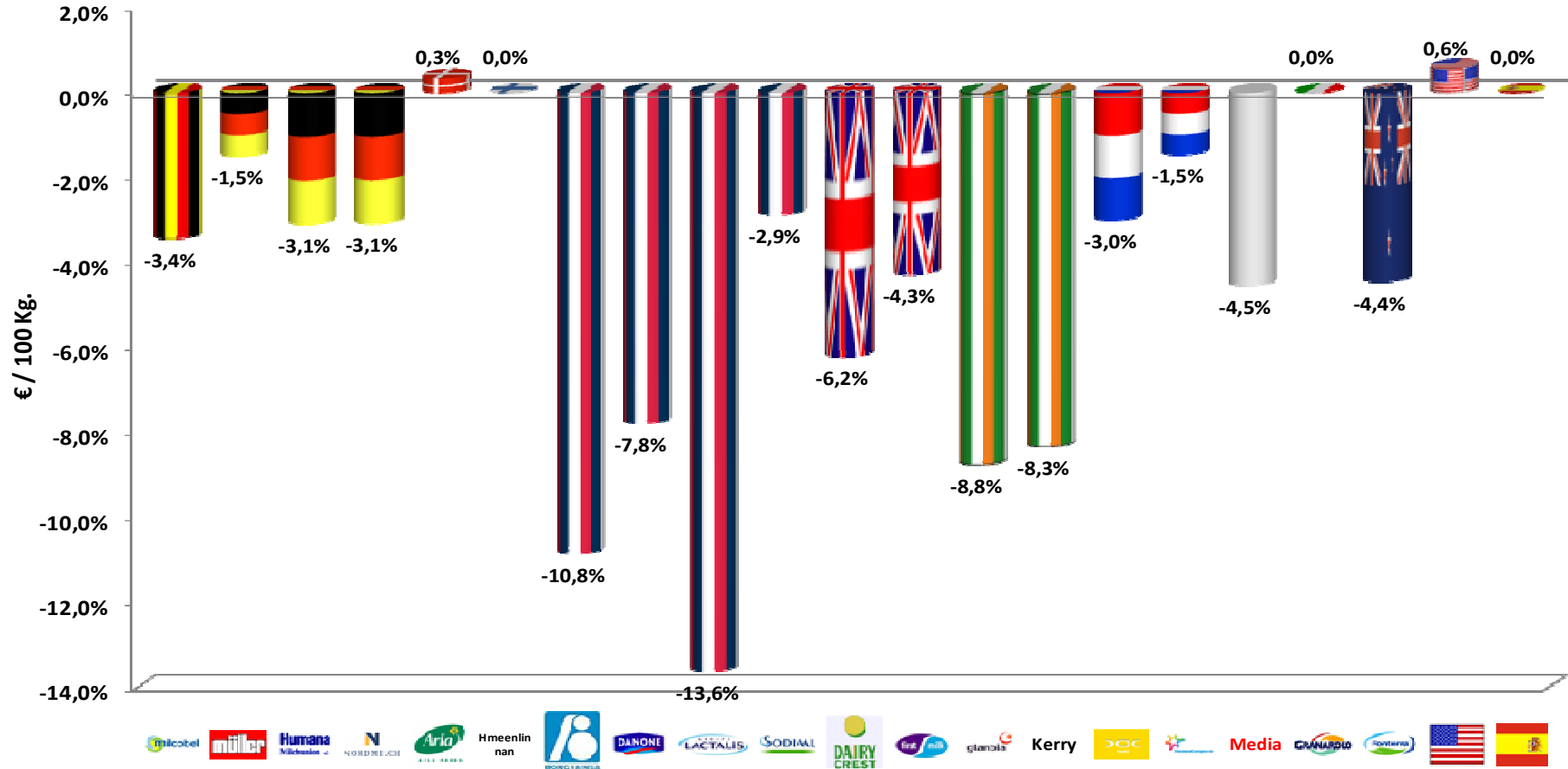


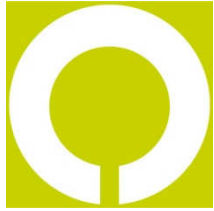
cooperativas
agro-alimentarias
>somos futuro



PRECIO DE LA LECHE

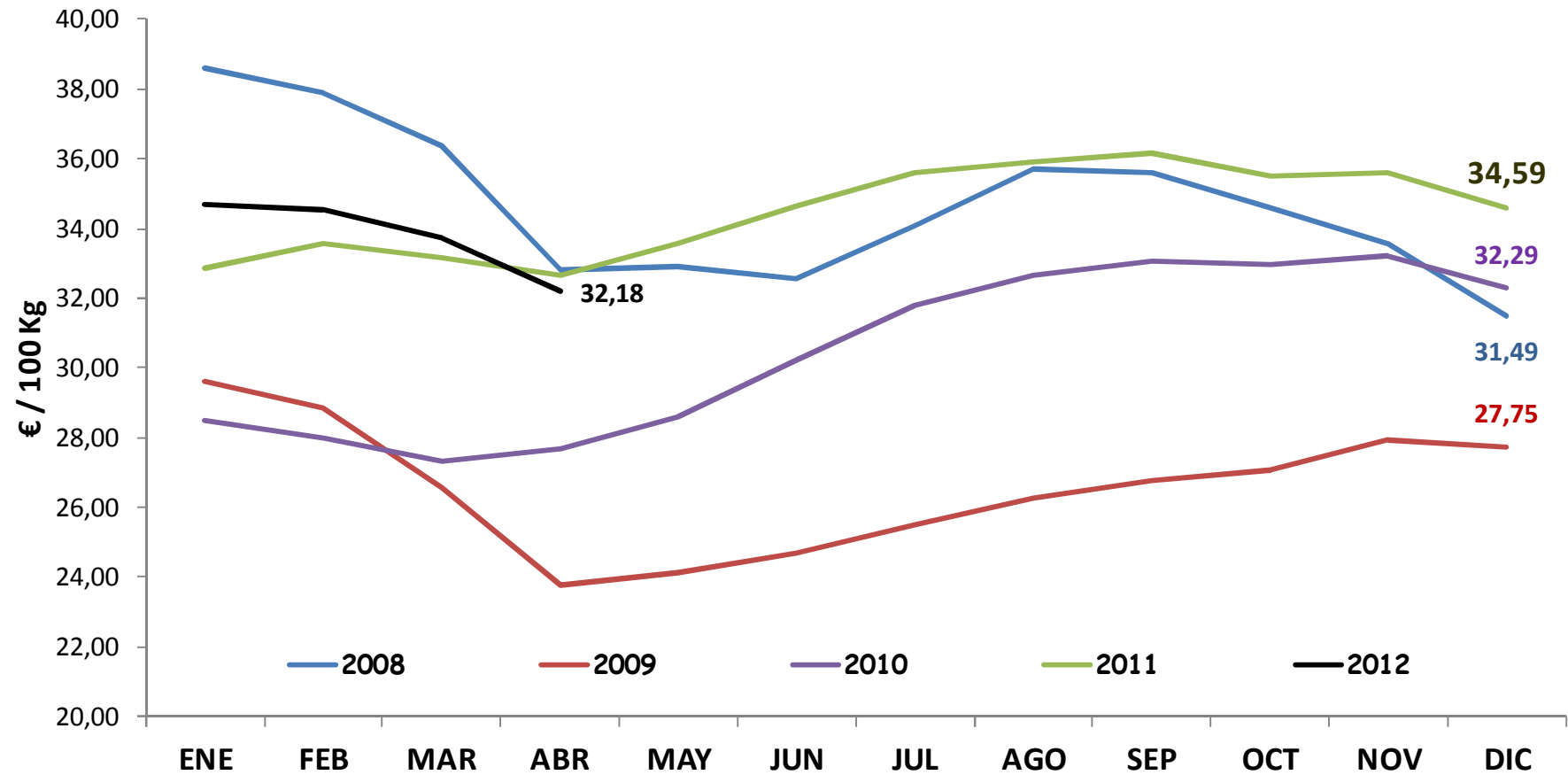
(VARIACIÓN MENSUAL ABRIL/MARZO 2012)

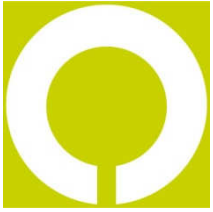




PRECIO DE LA LECHE

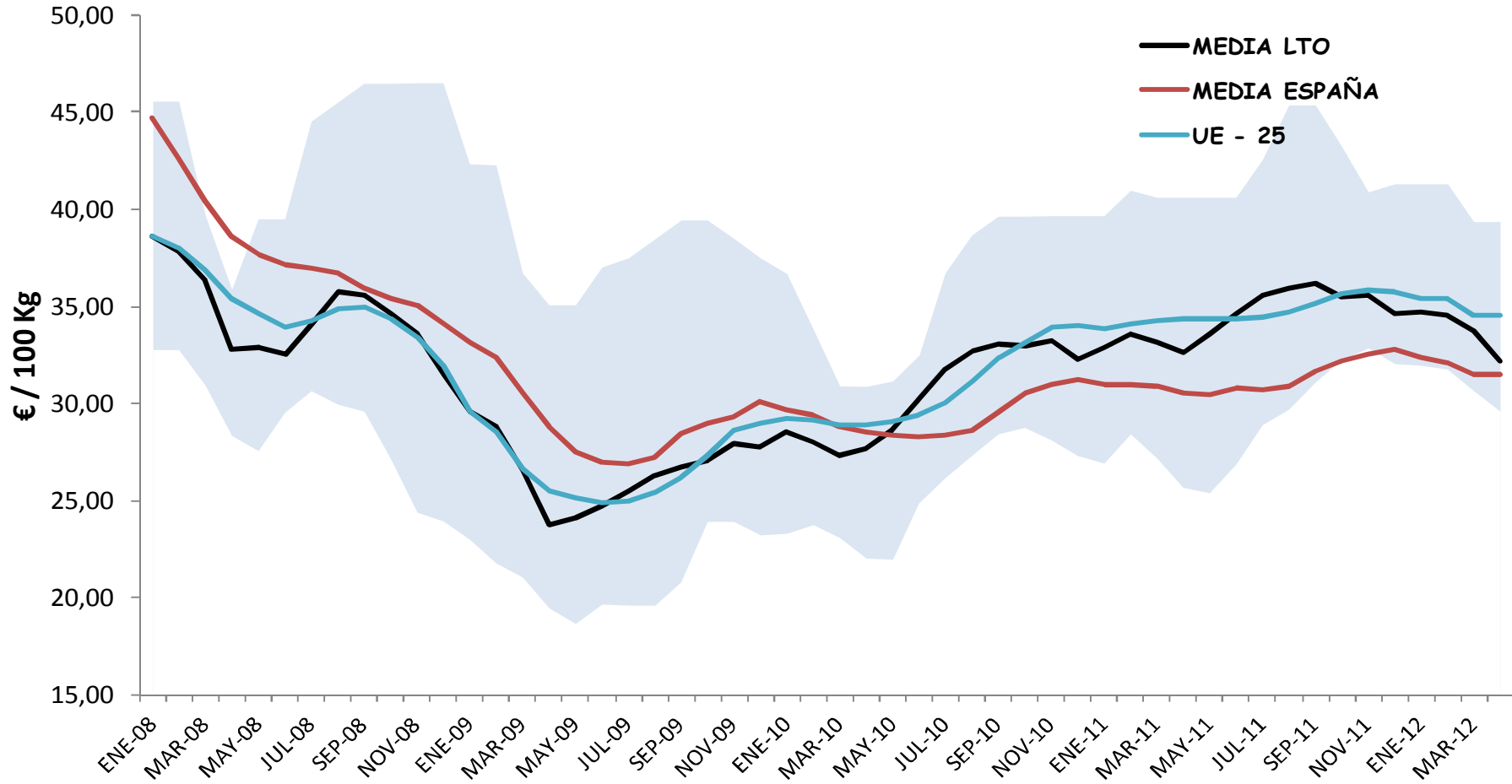
(EVOLUCIÓN PRECIO LTO)



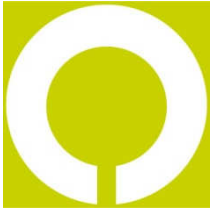


PRECIO DE LA LECHE

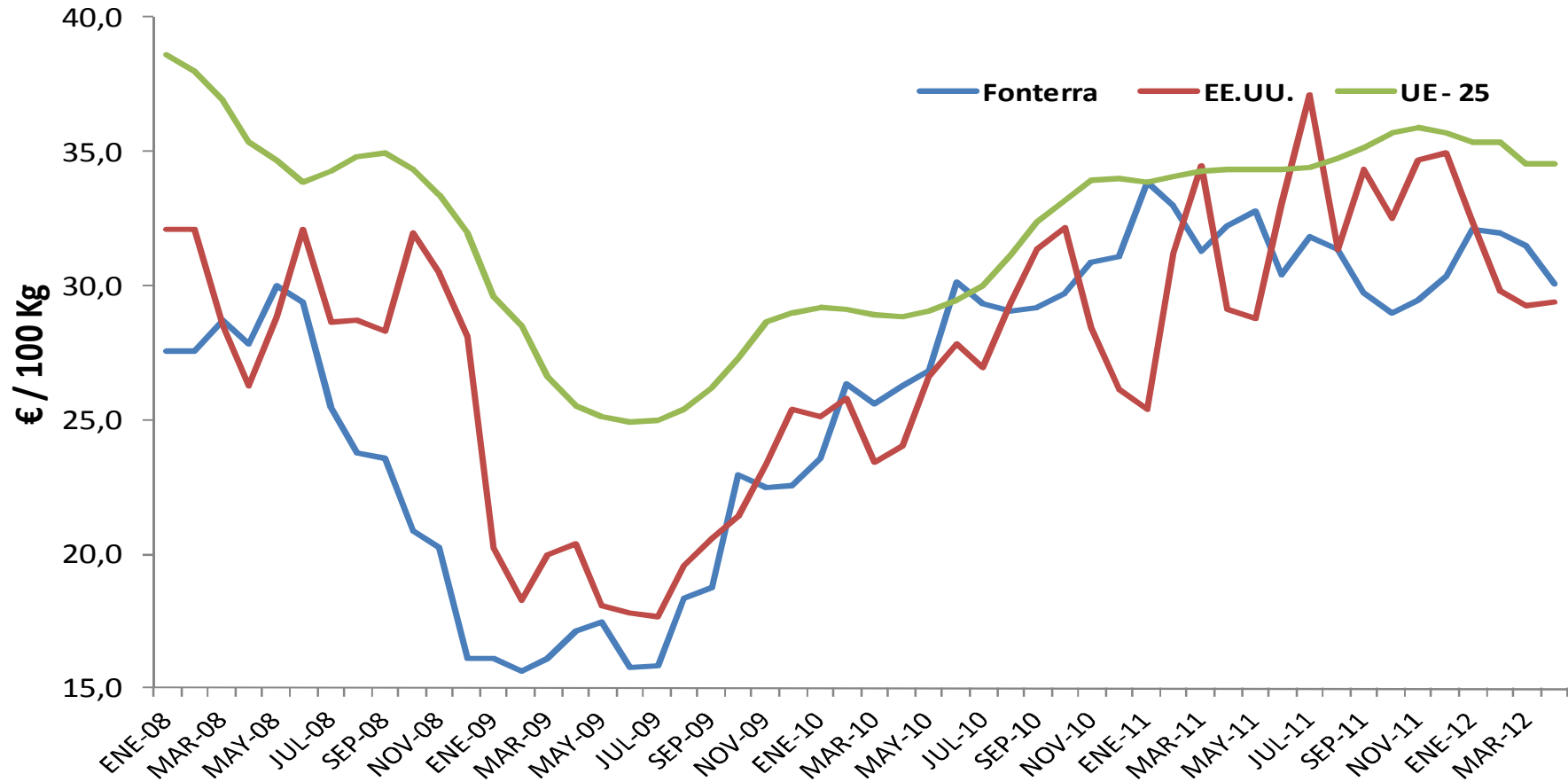
(EVOLUCIÓN Y COMPARACIÓN CON PRECIO ESPAÑA)



cooperativas
agro-alimentarias
>somos futuro



PRECIO DE LA LECHE (EVOLUCIÓN Y COMPARACIÓN MUNDIAL)





cooperativas
agro-alimentarias

> somos futuro